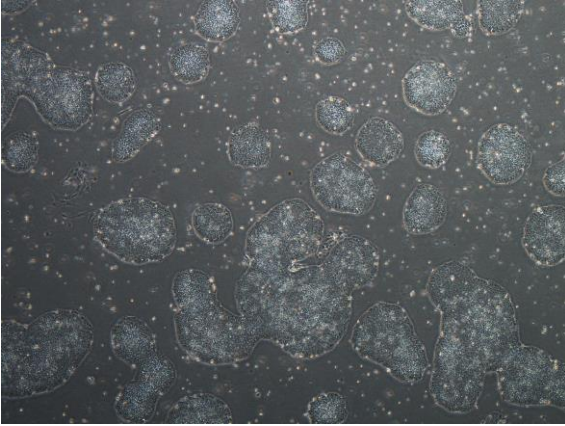
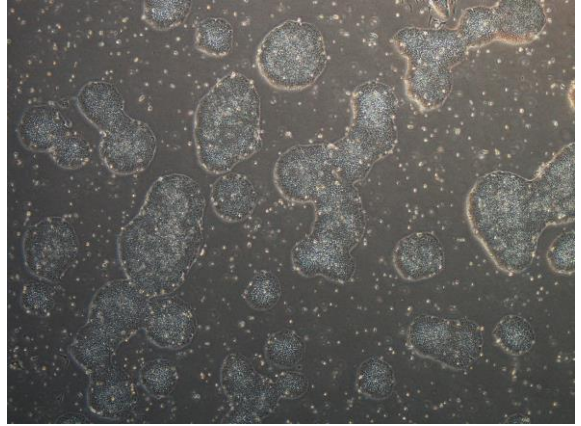


【 CiRA-j-1375 】 Morphology of iPSC colonies

CiRA-j-1375-A: passage-3



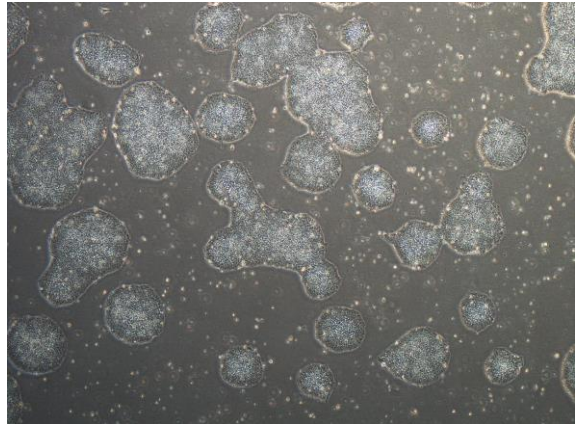
CiRA-j-1375-B: passage-3



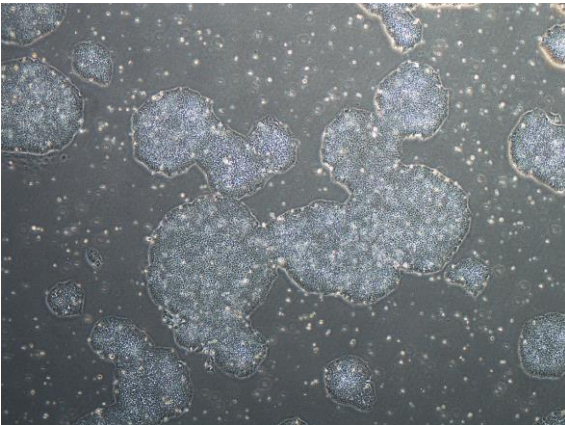
CiRA-j-1375-C: passage-3



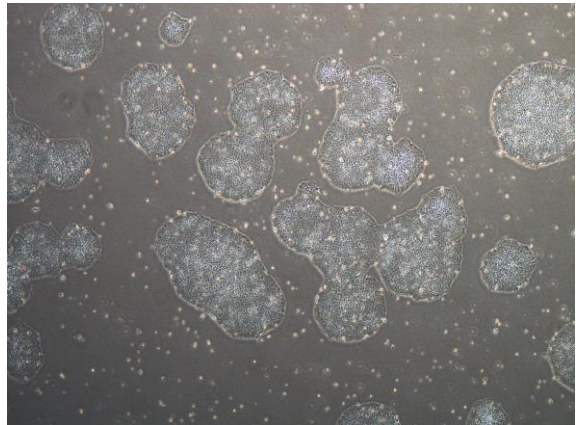
CiRA-j-1375-D: passage-3



CiRA-j-1375-E: passage-3



CiRA-j-1375-F: passage-3



(All images were captured at 4x magnification)